

# GET

## Global Engineering & Trading Ltd

Serving Clients since 1995



**STEEL-FRAMED MANUFACTURED HOUSES**  
**STEEL-FRAMED BUNGALOWS**  
**TINY HOUSE & GARDEN RETREATS**  
**STEEL-FRAMED BUILDINGS**  
**TURN-KEY HOSPITALS**  
**TURN-KEY HOTELS**

# SUMMARY OF OUR SERVICES



**Steel-Structured Building Construction**



**Steel-Framed Pre-Manufactured Hospitals, Schools, Offices, Hotels etc.**



**Steel-Framed Manufactured Modular Houses & Villas**



**ECONOMIC BUNGALOWS**



**TINY HOUSE / GARDEN RETREATS**



**TURN-KEY HOSPITALS**

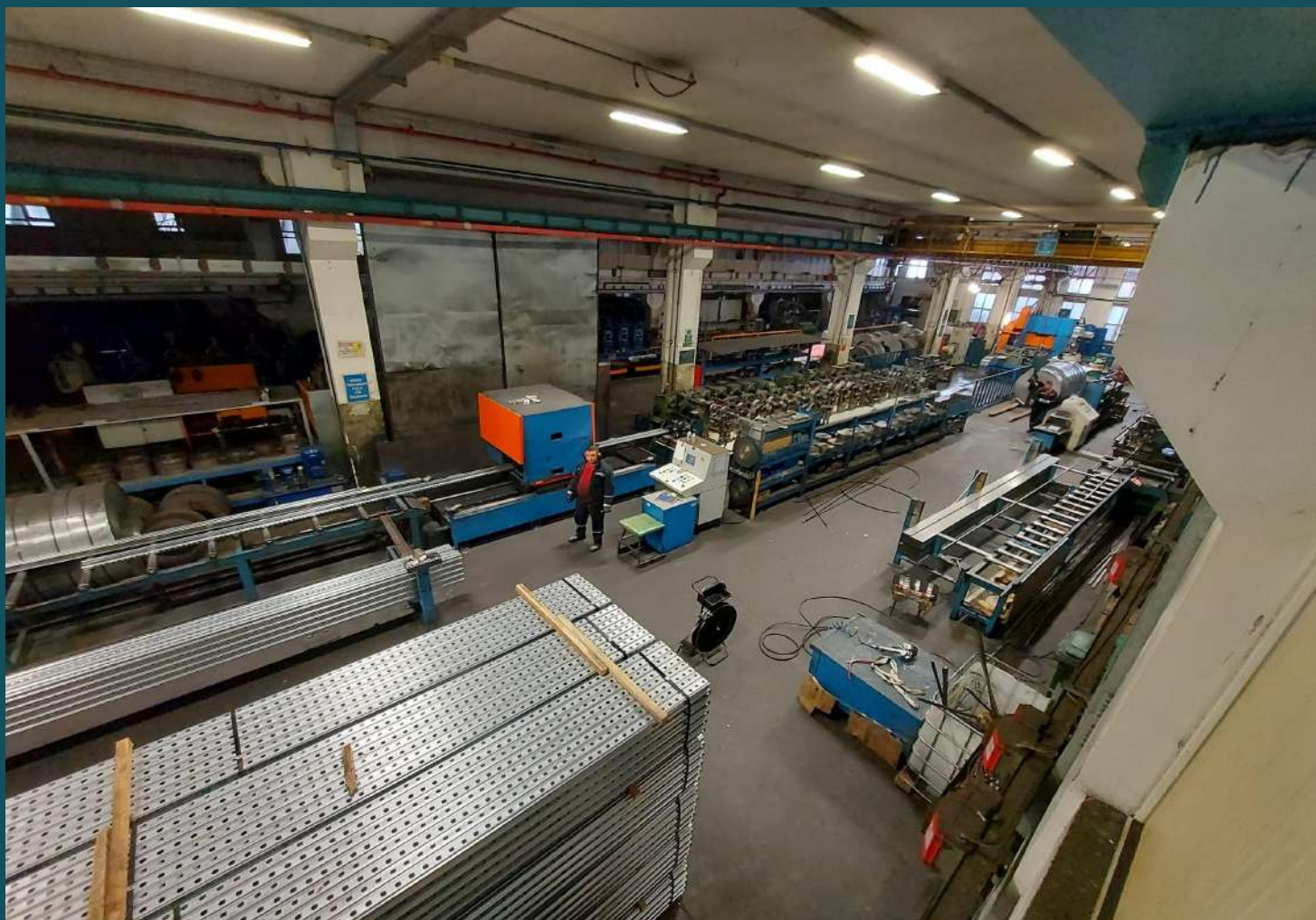
**TURN-KEY HOTELS**

# OUR FACTORY

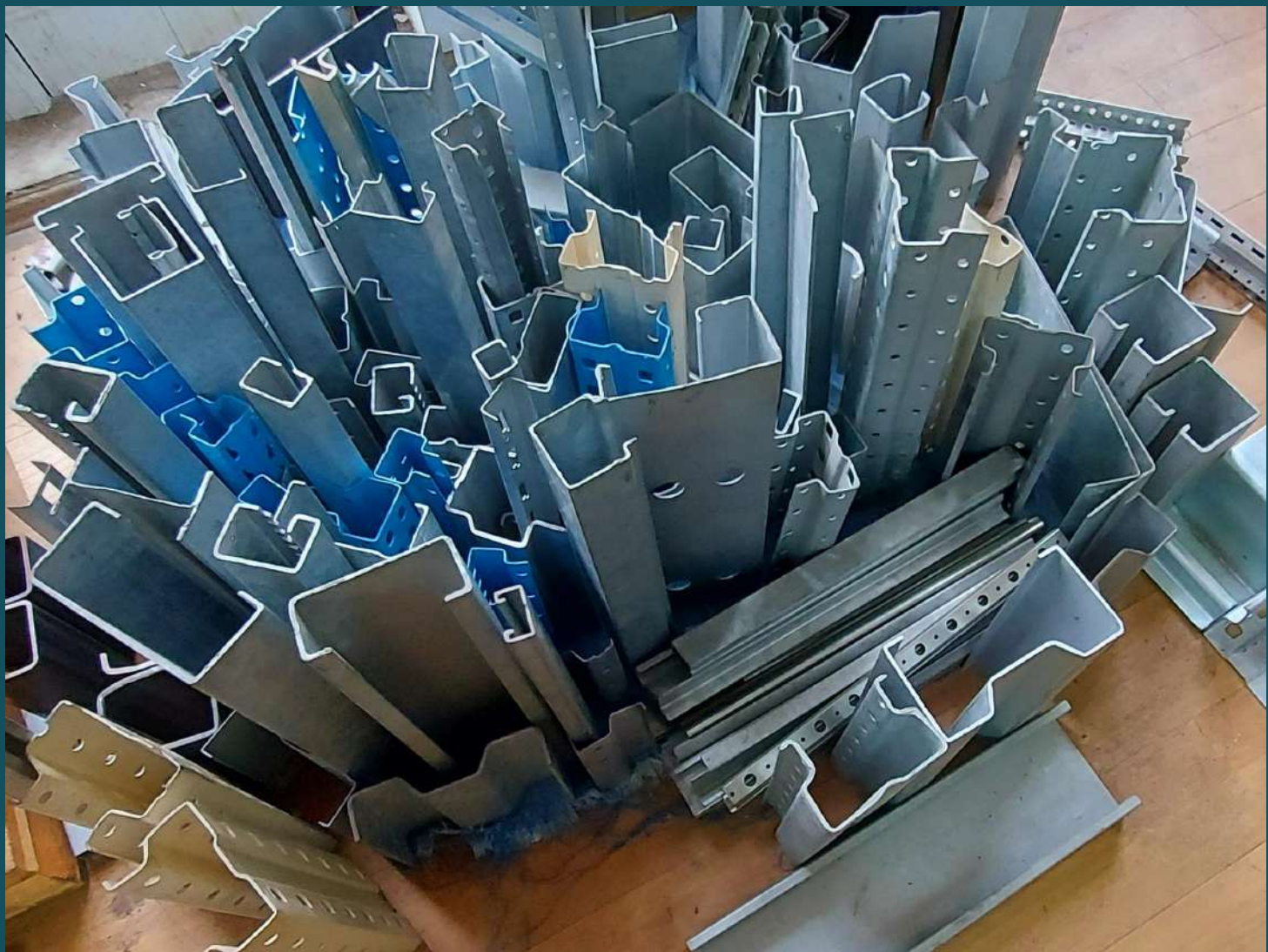


**We are manufacturing Medium-Gauge Steel Profiles using Cold-Roll Forming Machines in our Factory in Gebze near Istanbul, Turkey.**

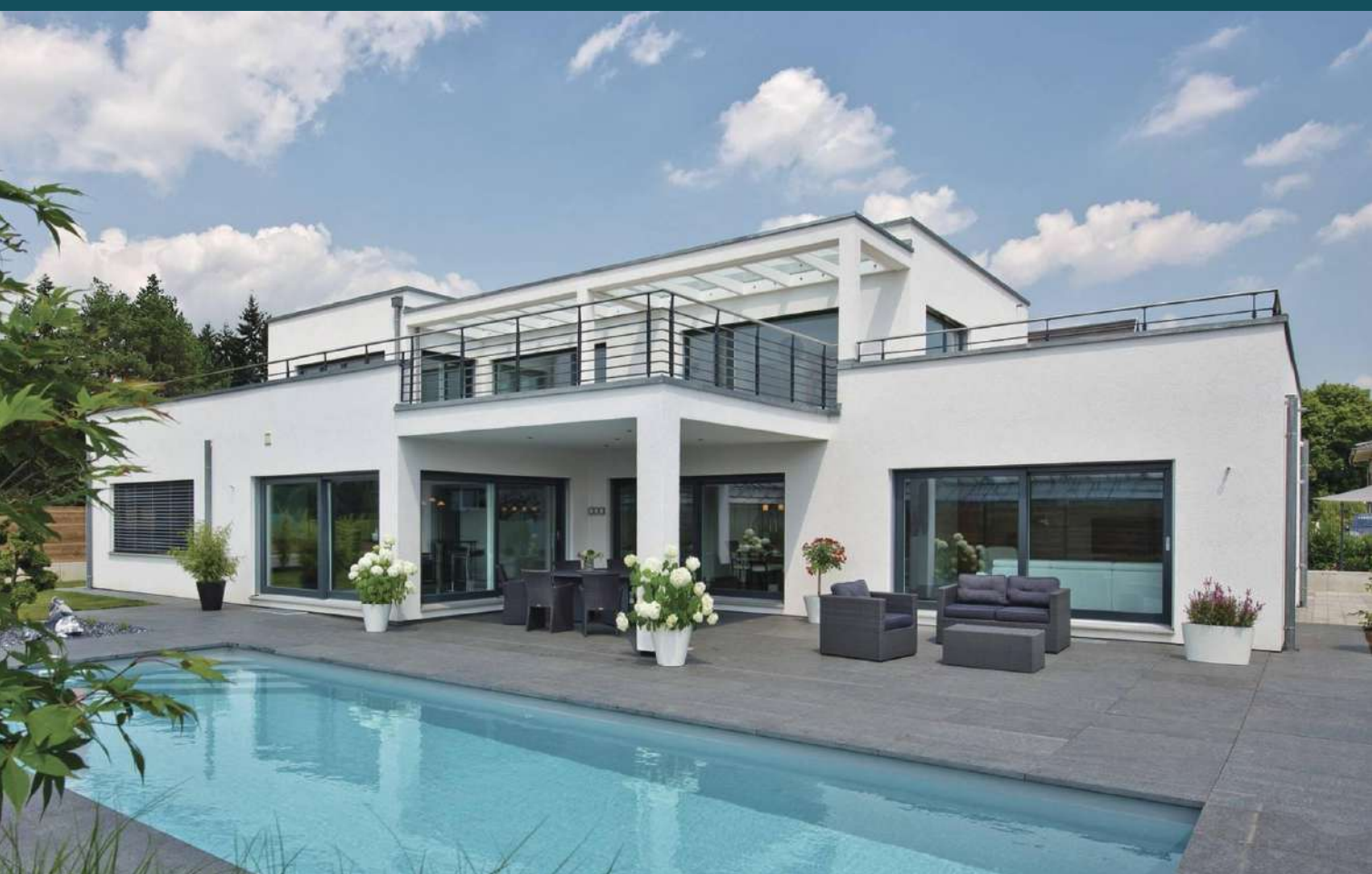
**We are the only Turkish Manufacturer who can produce Steel Profiles of thickness between 2 and 8 mm. This gives us the advantage of manufacturing and erecting 4 storey buildings and 12 mt high warehouses with strong steel frames and using less quantities of profiles, thereby reducing installation time and cost.**







# MANUFACTURED LUXURY HOUSES

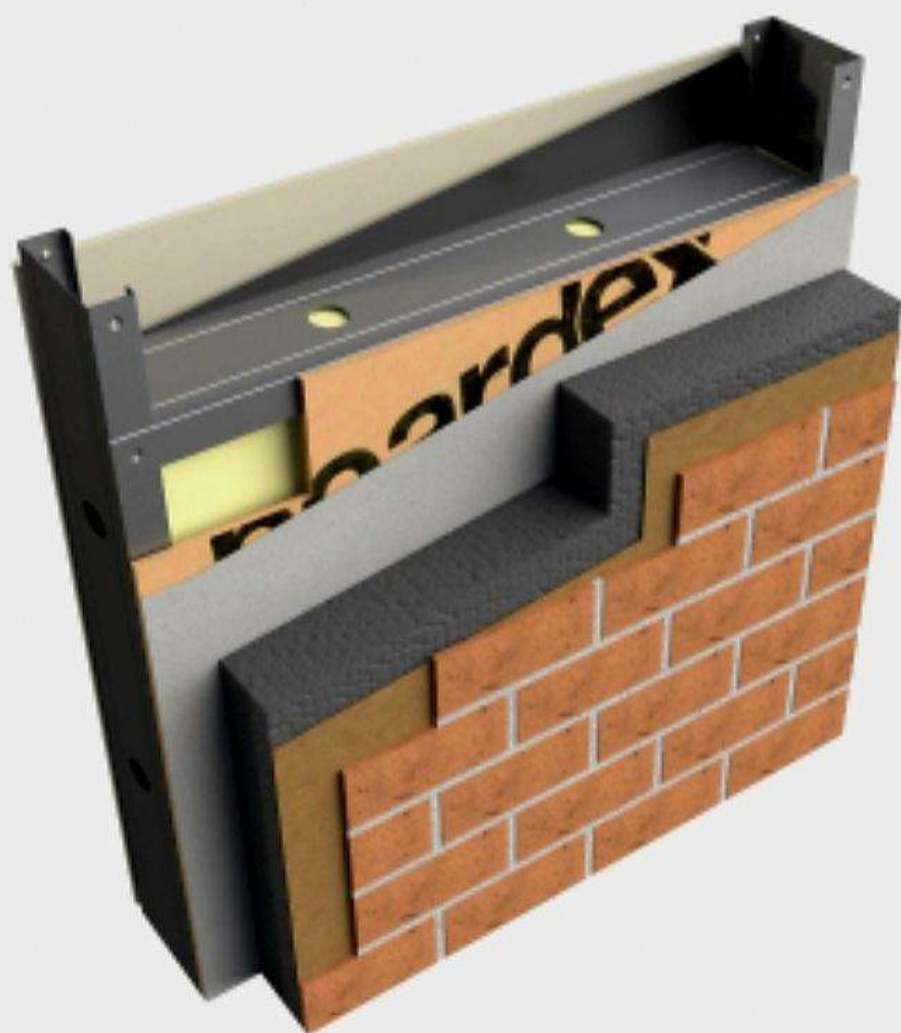
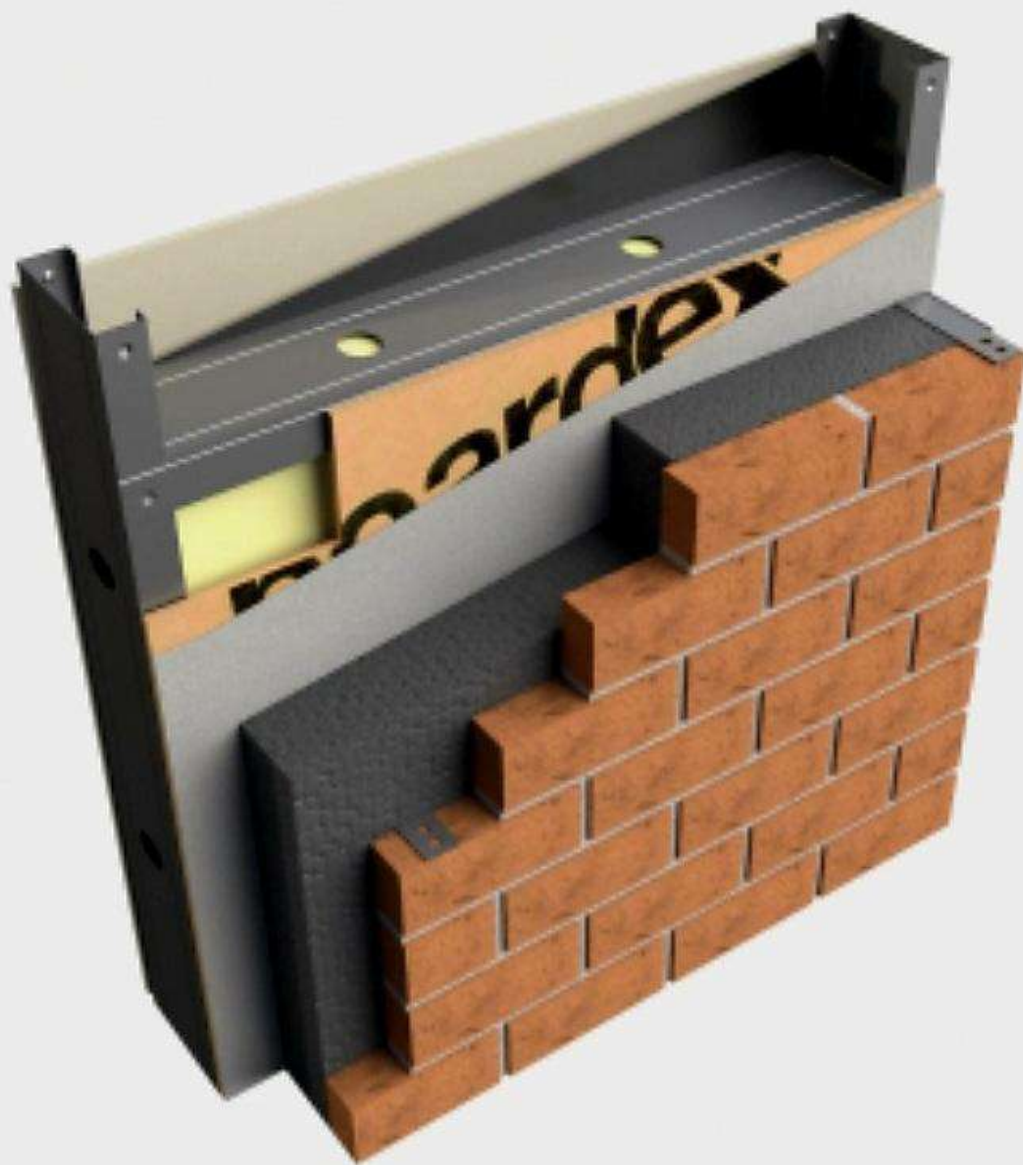


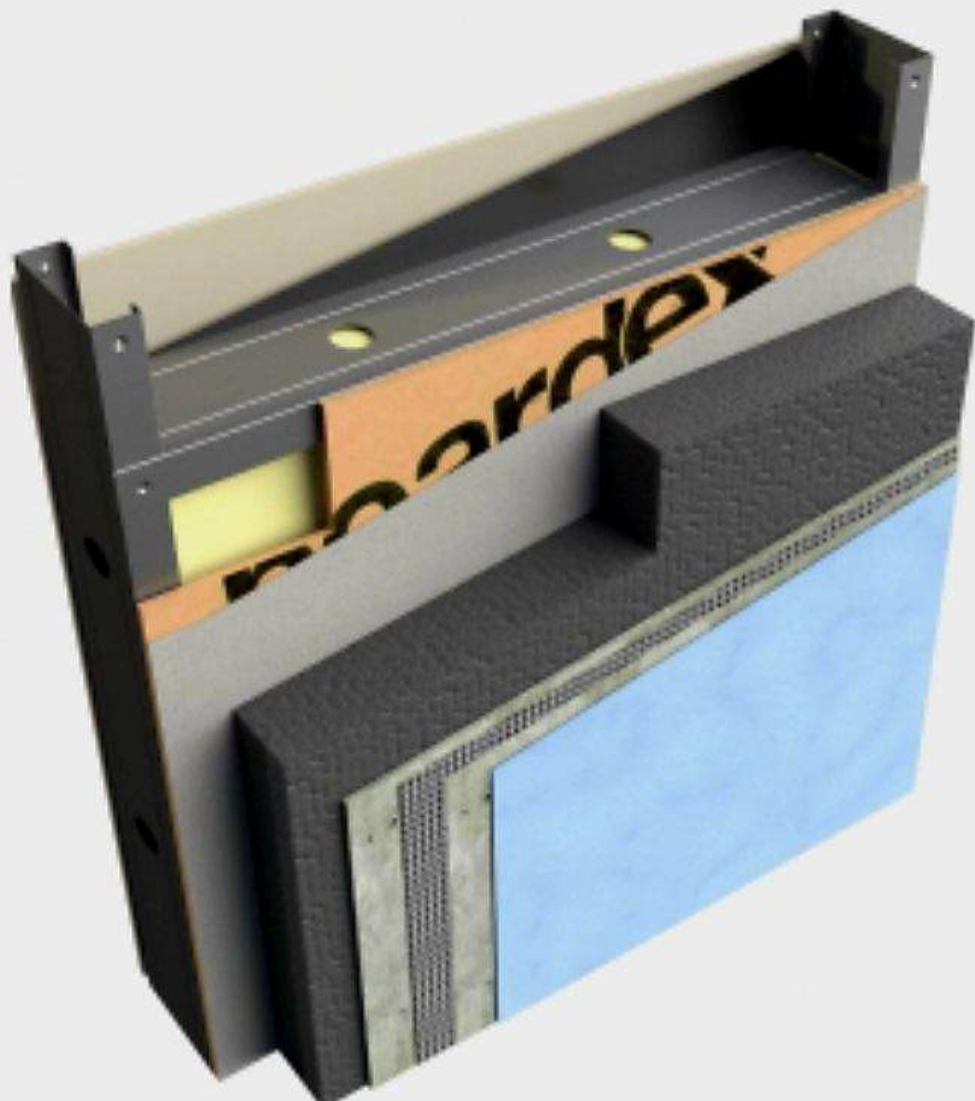






















# SOME OF OUR REFERENCE PROJECTS







# ECONOMIC BUNGALOWS





**ECONOMIC BUNGALOWS**



**ECONOMIC BUNGALOWS**



**PREFABRICATED HOUSE ASSEMBLY**





## ECONOMIC BUNGALOWS

# TINY HOUSE & GARDEN RETREATS









# STEEL-STRUCTURED BUILDINGS



**FACTORIES, WAREHOUSES, OFFICES, SUPERMARKETS,  
SCHOOLS, HOSPITALS, SPORT HALLS, HOTELS ETC.**



















Ali Kemal Pekkendir

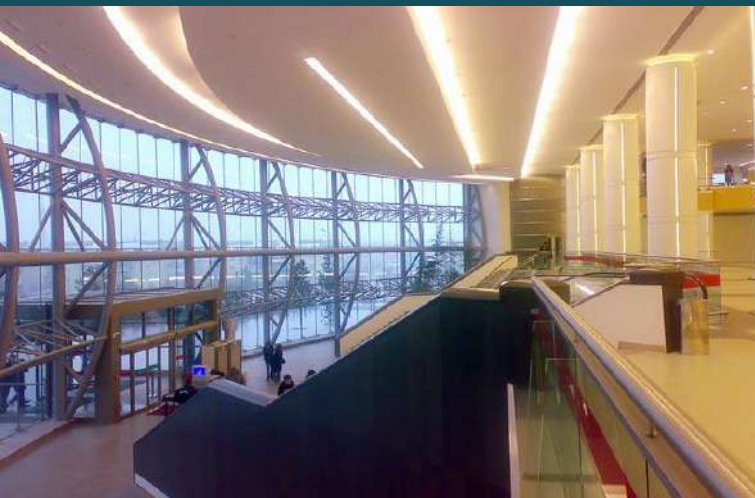




**212-SHOPPING MALL-ISTANBUL**



**BETEK PAINT FACTORY-IZMIT**



**NEO SHOPPING CENTER-ESKISEHIR**



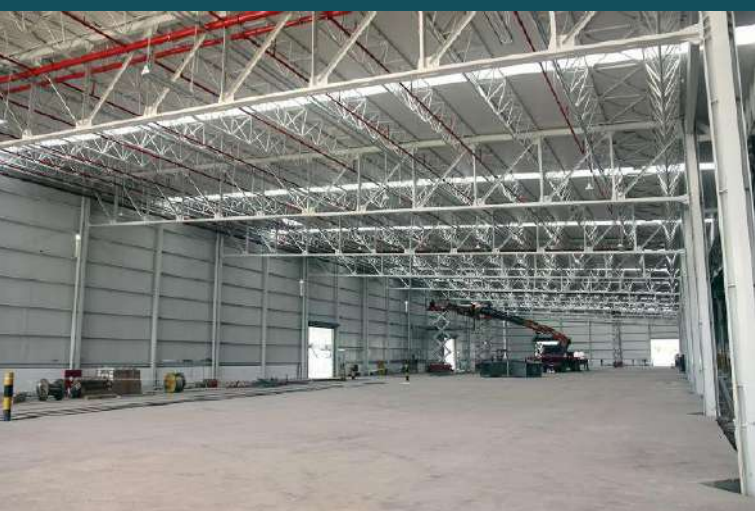
**UNCULAR WAREHOUSE-IZMIT**



**BARSAN LOGISTICS-TUZLA-ISTANBUL**



**FRIGO WAREHOUSE-ISTANBUL**



**TURYAG WAREHOUSE-BALIKESIR**



**SENPILIC CHICKEN FACTORY**



**ENTIL WASTE-TREATMENT PLANT**



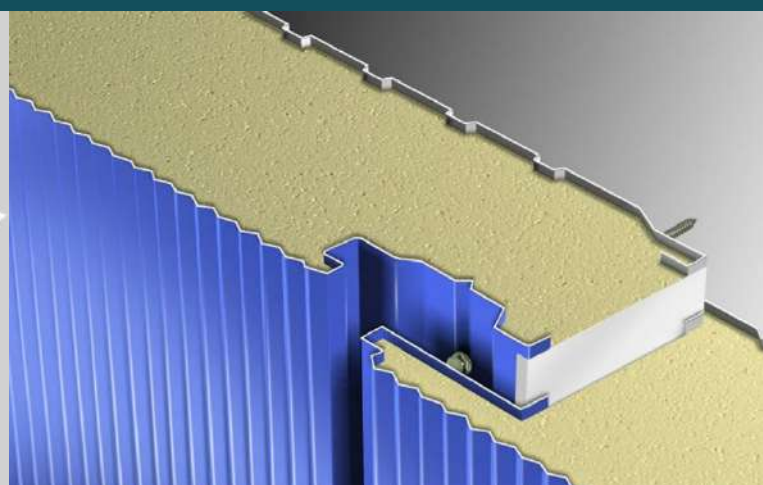
**ENTIL FOUNDRY BUILDING**



**HEKIM YAPI FACTORY BUILDING-SAKARYA**



**FACTORY BUILDINGS IN SAKARYA INDUSTRIAL ESTATE**



**TURN-KEY BUILDINGS WITH  
 ALL WALLS, ROOF & INTERIORS**

**SANDWICH PANELS WITH P.U.  
 INSULATION FOR WALLS & ROOF**



**SANDWICH PANELS OR STEEL SHEET ROOF COVERS**



**AUTO ROLL-UP DOORS**



**PREFAB OFFICE FLOORS INSIDE**

# TURN-KEY HOSPITALS







# TURN-KEY HOTELS & CARE CENTRES









**GET**

**Global Engineering & Trading Ltd**  
**Serving Clients since 1995**



**We want to help you succeed in your  
projects and business.**

**LONDON & ISTANBUL**

**UK +44 7378 474 181      w.app +90 530 144 7303**

**[www.get1995.com](http://www.get1995.com)**